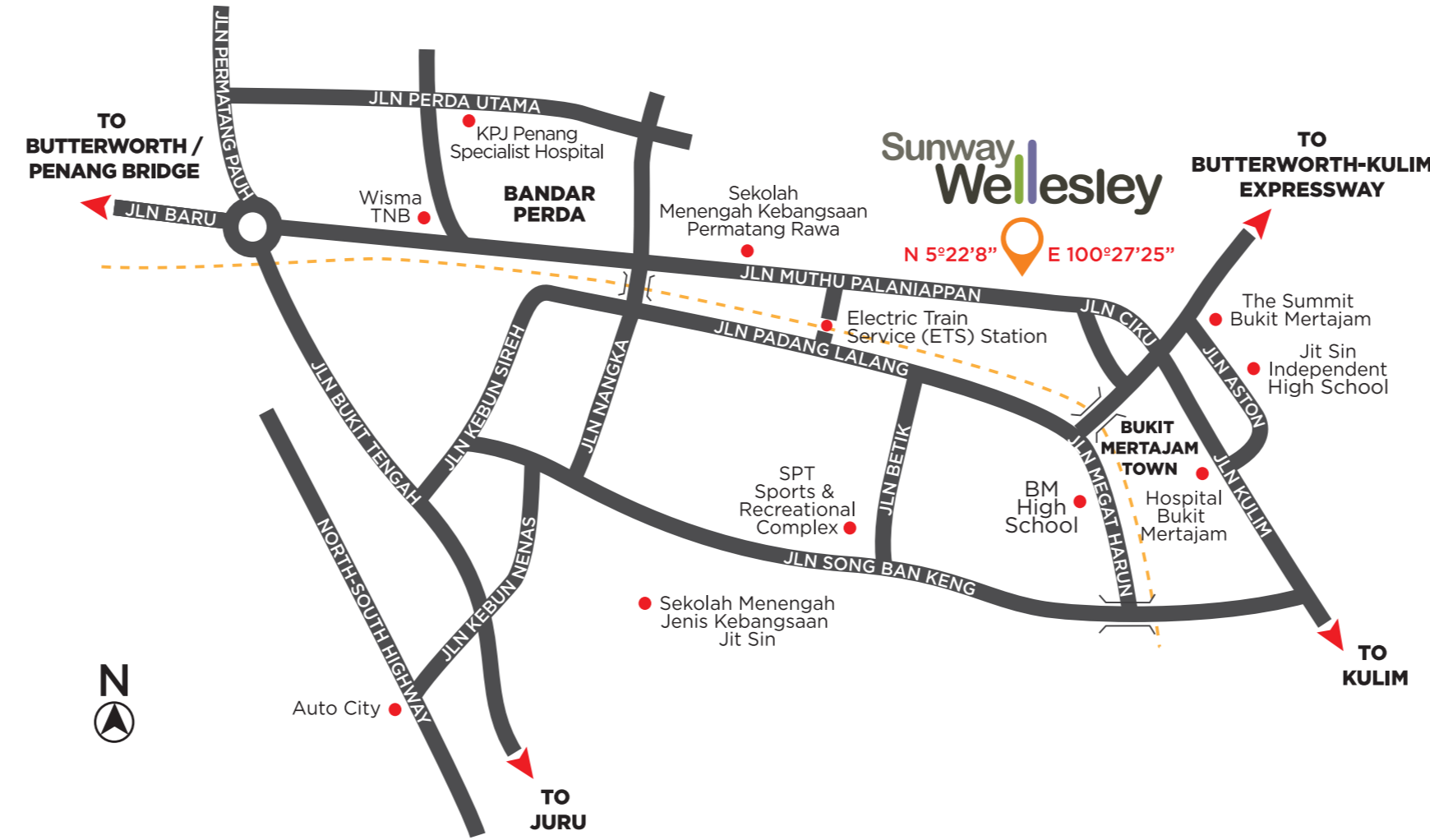
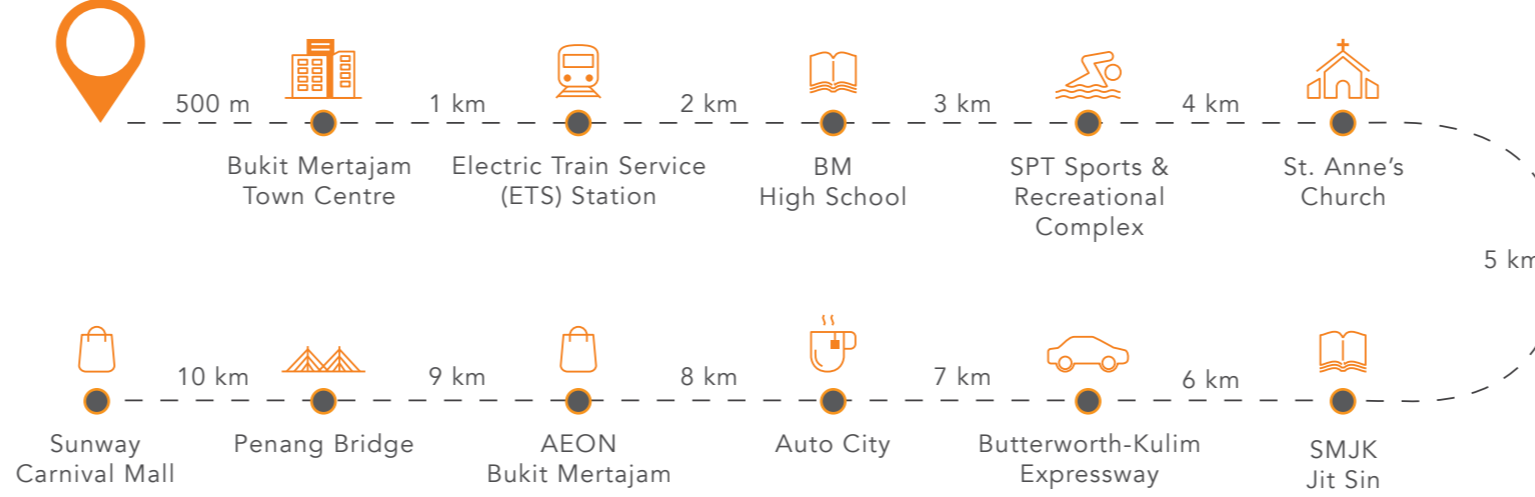


## Project Overview

Sunway Wellesley - a master-planned tropical resort-themed development that excels in providing comfortable tropical residences and dynamic urban commercial lots all with plush landscaping throughout.



## Sunway Wellesley



**SUNWAY PROPERTY**  
Master Community Developer

Li Siah | Louise | Low  
011-5157 3139 | 016-410 2883 | 017-431 1519  
www.sunwayproperty.com

Sunway Bintang Sdn Bhd (238575-M) • No. 28, Jalan Anson, 10400 Georgetown, Penang • The information contained herein is subject to change without notification as may be required by relevant authorities or the developer's consultants and cannot form part of an offer or contract. The name of this development is subject to approval by relevant authorities. Whilst every care is taken in providing this information, the owner, developer and managers cannot be held liable for variations. All illustrations and pictures are artist impressions only and all measurements are approximate. The items are subject to variations, modifications and substitutions as may be recommended by the Company's consultants and / or relevant Approving Authorities.

## Sunway Wellesley UPTOWN 2



ALL THE SPACE  
AT THE RIGHT PLACE

**SUNWAY**

\* Whilst every care is taken in providing this information, all measurements and information in this leaflet are for illustrative purposes only. All proposed developments shown are subject to authority's approval and variations. We do not warrant or make any representations regarding the correctness, accuracy, reliability, or any other aspect regarding the information provided and proposed development shown. We are not liable for any errors, omissions or further variations in the information provided here or for any loss or damage suffered by persons who rely on such information.

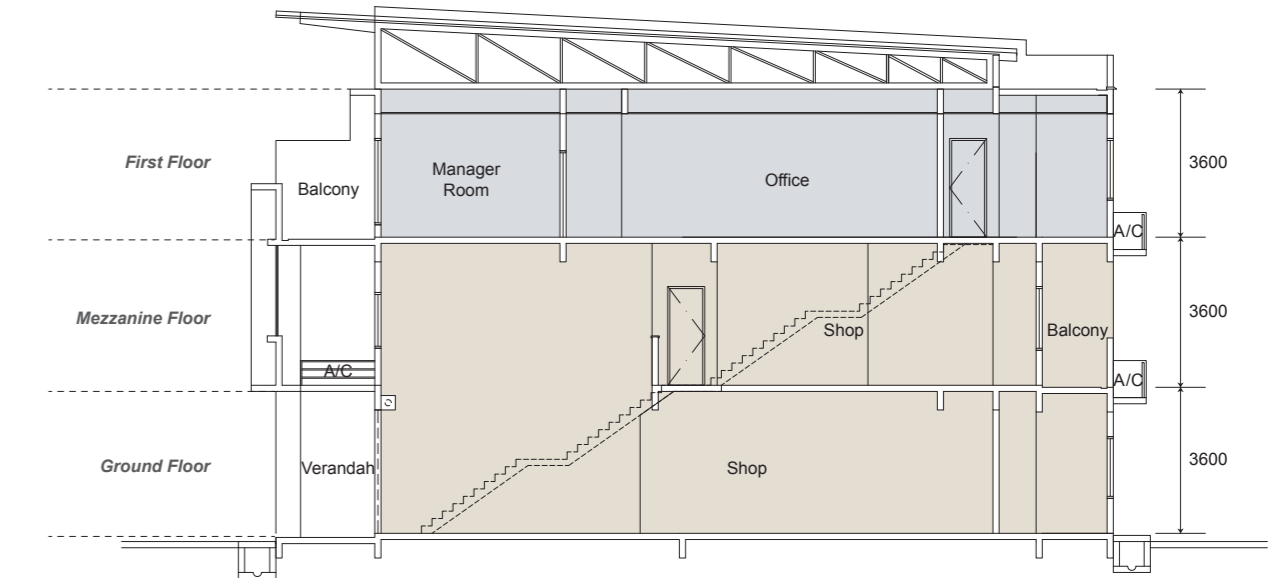
ALL THE SPACE.  
ALL THE POSSIBILITIES.



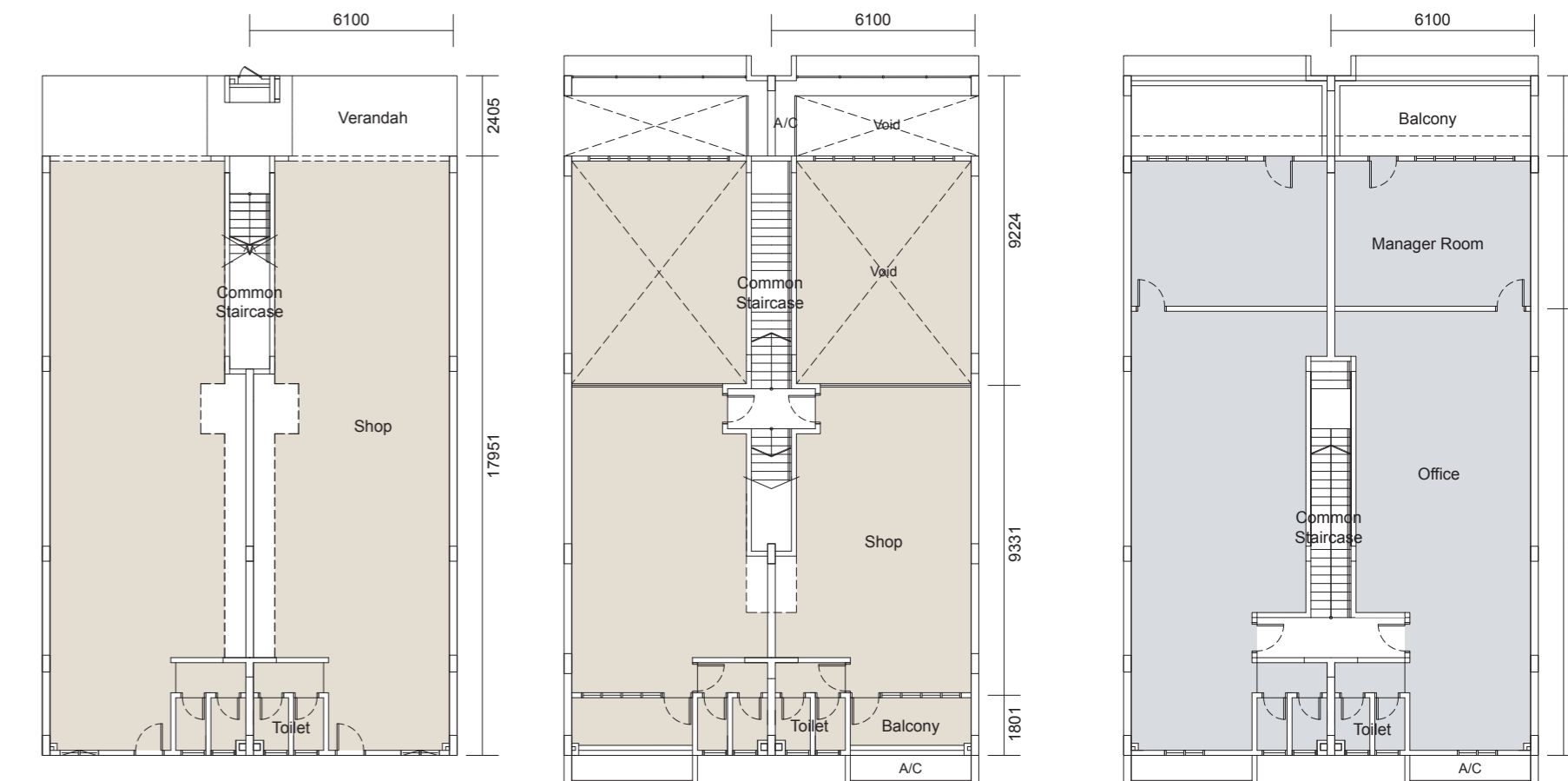
Shops and Offices with exposure to growing neighbourhood

ALL THE SPACE.  
TO MAKE IT HAPPEN.

SECTION PLAN



FLOOR PLAN



Ground & Mezzanine Floor  
Built-up Area: 1,830 - 2,745 sq.ft.

First Floor  
Built-up Area: 1,238 - 1,733 sq.ft.

## Uptown 2

Sunway Wellesley's Uptown 2 is a freehold modern contemporary commercial precinct located in Bukit Mertajam, Penang. Featuring only a limited 20 units of shops and offices, Uptown 2 is designed to appeal to both investors and business owners who desire a prime location while enjoying many key advantages.

As Sunway Wellesley continues to grow, Uptown 2 is especially appealing to those who wish to transform it into a complementing Lifestyle Hub with their own unique brand. This is an immense advantage for investors and business owners who will surely enjoy the ready catchment of consumers.

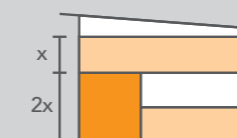
### Key Points



TARGETED  
**5,000**  
RESIDENTS'  
COMMUNITY



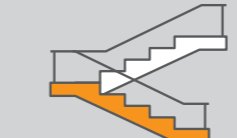
**BRIDGING**  
THE PRESENT  
& FUTURE



**2** DOUBLE  
VOLUME  
SPACE



**12** ft  
HIGH  
CEILINGS



**FLEXIBILITY**  
OF SPACE WITH  
MEZZANINE FLOOR